



DISTRIBUTORS & CONSOLIDATORS OF AMERICA

A North American Network of asset based companies
providing consolidation, distribution, warehousing,
transportation and 3PL solutions.



2025

www.dacacarriers.com



LEONARD'S GUIDE

LEONARD'S GUIDE

LOGISTICS • TRUCKING • WAREHOUSING



Leonard's Guide has been serving the freight transportation industry since 1912, and is the leading provider of print and online information on North American Trucking, Warehousing, Third Party Logistics, and Air Cargo Companies.

Manufacturers, shippers, carriers and other industry professionals around the world rely on **Leonard's Guide** as their source for comprehensive, accurate, and up-to-date information on freight transportation and warehouse companies.

LEONARD'S GUIDE ONLINE



Free RFP Feature

- Search for companies that provide the service you need.
- One click and your request for rate/service information is sent to multiple service providers.

Contact us today for more information, or to list your company and services.

800-574-5250

www.leonardsguide.com



United States

Alaska	Lynden Transport, Inc.	6
California	Frontline Freight Inc.	7
California	STG Logistics.....	8
Hawaii	Honolulu Freight Service	9
Illinois	Moran Transportation Corporation	10
Illinois	FLO Trans	11
Massachusetts.....	Fowler's Express	12
Michigan	Automated Logistics Systems, LLC.....	13
Michigan	Davis Cartage	14
Minnesota	King Solutions, Inc.	15
Missouri.....	NOTS Logistics	16
New Jersey	PAVXPRESS.....	17
New Jersey	PJT Logistics Service.....	18
New York	Speed Global Services.....	19
Ohio	Cleveland ExpressTrucking	20
Pennsylvania	A. Duie Pyle, Inc.	21
Pennsylvania	Maple Logistics Solutions.....	22
Texas	Pronto Delivery Courier Logistics	23
Washington	Peninisula Truck Lines	24

Canada

Ontario	Polaris Transportation Group.....	25
Ontario	Speedy Transport.....	26



Alaska & Alberta Canada

North American Locations

New England

Boston, MA
Fowler's Express
Tim Foster • 800-633-6103

Middle Atlantic

Edison, NJ
PJT Logistics Service
Michael Mecca • 732 243 9450

Clifton, NJ
PAVXPRESS
Kenneth Pavlik • 201 330 8300

Buffalo, NY
Speed Global Services
Carl Savarino • 716-876-2235 x1700

Philadelphia, PA
A. Duie Pyle, Inc.
Jack Latta • 800-523-5020

York, PA
Maple Logistics Solutions
Chris Benyovszky • 717-764-4596

South Central

Arlington, TX
Pronto Delivery Courier Logistics, LLC
John Blesi • 817.261.0035

North Central

Chicago, IL
Moran Transportation
Michael D. Moran • 847-439-0000

Chicago, IL
FLO Trans
Matt Berkshire • 708-929-4431

Jackson, MI
Automated Logistic Services, LLC
Joe Parker • 800-551-9399

Corunna, MI
Davis Cartage
Kevin Nevison • 800 521 0001 x231

Rogers, MN
King Solutions, Inc.
Deann Elfering • 763-428-5329

St. Louis, MO
NOTS Logistics
Kevin J. Brink • 877-477-9677

Cleveland, OH
Cleveland Express Trucking
Tom Wagner • 216-348-1007

Pacific

Walnut CA
STG Logistics
Lori Hooper • 714-658-5167

Federal Way, WA
Peninsula Truck Lines, Inc.
Brenett Waltos • 253-929-2014

City or Industry, CA
Frontline Freight
Matt Hunter • 800-243-5422

Alaska

Anchorage, AK
Lynden Transport
Steve Hartmann • 800-426-5702

Hawaii

Honolulu, HI
Honolulu Freight Service
Raymond Rodriguez • 800-777-4963

Canada

Mississauga, ON
Polaris Transport Carriers, Inc.
David Cox • (800) 409-2269

Brampton, ON
Speedy Transport
Jared Martin • 800-265-5351

A comprehensive transportation
and distribution management provider
Updated as of 12/1/2024

*The listings of DACA member locations
above reflect their main corporate
contact. Many DACA members have
various facilities throughout the U.S.
and North America. Refer to their
listing page or the DACA website for
additional locations.*

For more information
visit us on the web at
www.dacacarriers.com
or contact us at **717-764-6531**





Where supply chain pros come together to find solutions

Come get face-to-face with the people, technologies and ideas that are shaping this industry's future at ProMat 2025, your unrivaled supply chain experience. From hands-on demonstrations from over 1,100 leading suppliers to 200 thought-provoking seminars and four inspiring keynote speeches, ProMat has everything you need to make your operations more resilient, transparent and sustainable.

McCormick Place, Chicago | March 17-20, 2025

Learn more & register for free admission at
promatshow.com





DISTRIBUTORS & CONSOLIDATORS OF AMERICA

Alaska & Alberta Canada

Lynden Transport, Inc.

18000 International Blvd., Suite 800
Seattle, WA 98188
Phone 206-575-9575 • 800-426-5702
www.ltia.Lynden.com
transales@ltia.Lynden.com



Principal Contacts:

Jeff Yokoyama, Corporate Account Manager
yokoyama@lynden.com

Paul Friese, Vice President, Alaska Sales
paulf@lynden.com

Steven M. Hartmann, Vice President, Sales & Marketing
steveh@lynden.com

Service Centers

Anchorage Service Center (Open 24/7)

3027 Rampart Drive, Anchorage, AK 99501
Phone: 907-276-4800 • Fax: 907-257-5160
Toll free 800-327-9390

Alaska Gateway Service Center

5410 12th Street East, Fife, WA 98424
transales@lynden.com
Phone: 253-926-7200 • Fax: 253-926-7201
Toll free 800-326-5702

Services Offered:

- Assembly and Consolidation
- EDI
- LTL Services
- TL Services
- Heavy Haul
- Temperature Control
- Pool Distribution
- Oilfield and Hotshot
- Motor vessel service
- Container barge
- Highway schedules
- Complete electronic commerce services
- Warehousing
- Predictive Delivery

Areas Served:

- Alaska
- Alberta, Canada

Alaska Service Centers

Anchorage	Juneau	Prudhoe Bay
Cordova	Kenai	Sitka
Craig	Ketchikan	Skagway
Fairbanks	Kodiak	Tok
Haines	Palmer/Wasilla	Wrangell
Glennallen	Petersburg	

National

Los Angeles	Houston
310-816-6391	281-443-4200
800-675-9633	800-231-0582
Portland	Dallas
360-256-2998	972-399-6401
800-214-6748	800-201-0457

Canada

Calgary
403-203-3554
800-394-2766
Edmonton
780-960-9444
800-661-9006



California

Frontline Freight, Inc.



240 S. 6th Avenue
City of Industry, CA 91746
Toll Free: 800-243-5422
Fax: 562-236-1457
www.frontlinefreightinc.com

Principal Contacts:

Matt Hunter, President
matth@frontlinefreightinc.com
800-243-5422 ext 102

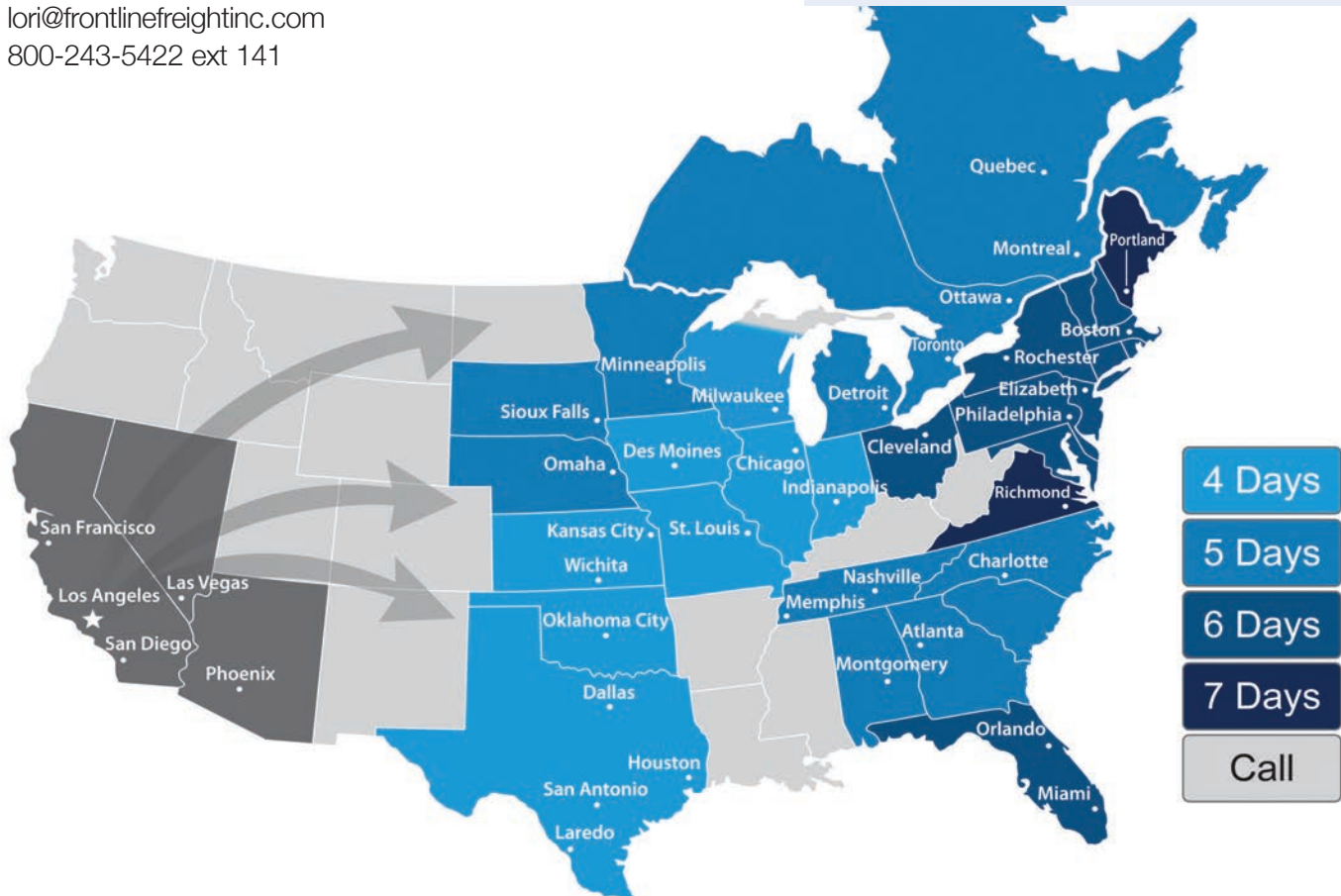
Lori Hooper, Executive Vice President of Sales and Strategy
lori@frontlinefreightinc.com
800-243-5422 ext 141

Services Offered:

- LTL
- Volume
- Deconsolidation
- Warehousing
- Transloading
- Crossdock
- Distribution

Areas Served:

- Nationwide





DISTRIBUTORS & CONSOLIDATORS OF AMERICA

California

**NEW
MEMBER
SPOTLIGHT**

STG Logistics

20405 Business Parkway
Walnut, CA 91789
800-243-5422
www.stgusa.com

Principal Contact:

Lori Hooper, VP, LTL Sales
Lori.Hooper@stgusa.com
714-658-5167

Cole Jodzio, Director of 3PL Sales
Cole.Jodzio@stgusa.com
949-201-0696

STG LTL has become the leader in Nationwide LTL (Less-than-truckload) services to and from Southern California. We continue to open new origin and destination points nationwide. If you're looking for freight savings and an online TMS, you've come to the right place. We understand our customers need more than LTL. We have created a vast network of partner relationships to provide Truckload (TL), Intermodal, Air Freight, Volume, and Flatbed deliveries.

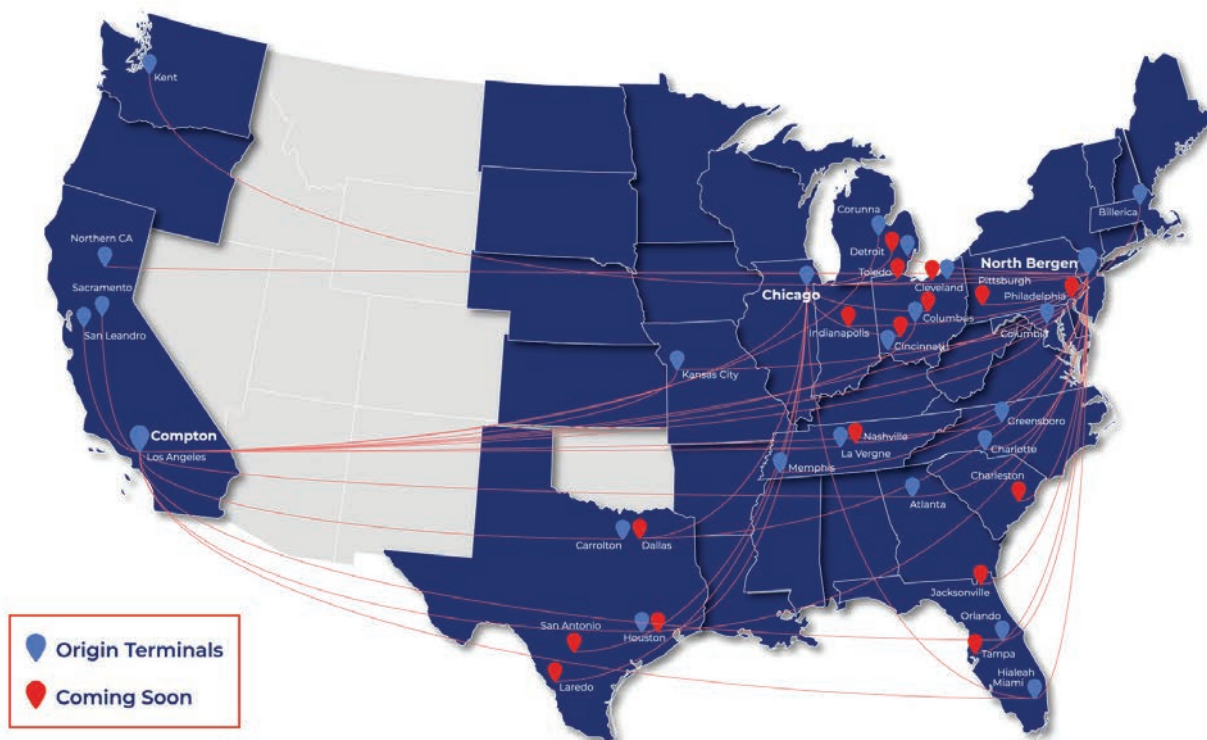


Services Offered:

- LTL
- Volume
- Deconsolidation
- Intermodal
- Warehousing
- Transloading
- Crossdock
- Distribution

Areas Served:

- Nationwide





Hawaii

Honolulu Freight Service

1400 Date Street
Montebello, Calif. 90640
Phone 800-777-4963
Fax 323-887-6776
www.honolulufreightservice.com



Principal Contacts:

Mike Beidleman, President
Raymond Rodriguez, Vice President of Sales & Marketing
828-527-9289
rrodriguez@hfsnet.com

Terminals

Los Angeles, CA

Raymond Rodriguez, Vice President of Sales & Marketing
Phone 828-527-9289 Fax 323-887-6776
rrodriguez@hfsnet.com

Tacoma, WA

Kim Tanudra, Terminal Manager
Phone 800-216-0582 Fax 206-625-9625
ktanudra@hfsnet.com

Portland, OR

Kim Tanudra, Terminal Manager
Phone 800-216-0582 Fax 206-625-9625
ktanudra@hfsnet.com

Oakland, CA

Randy Coon, Terminal Manager
Phone 800-576-7621 Fax 510-614-8121
rcoon@hfsnet.com

Honolulu, HI

Raymond Rodriguez, Vice President of Sales & Marketing
Phone 800-532-0258 Fax 808-843-1729
rrodriguez@hfsnet.com

Services Offered:

- Less than Container Load (LCL)
- Full Container Load (FCL)
- Assembly and Consolidation
- Trans-loading and Cross-Docking
- Refrigerated Service
- Hazardous Materials
- Logistics
- Project Cargo
- Flat Racks
- Personal Effects
- Residential Deliveries
- Container Drayage
- Warehousing
- Oversized commodities
- Specialized Equipment

Areas Served:

- Hawaiian Islands and Guam

Islands served:

- Oahu
- Maui
- Kauai
- Hawaii
- Molokai
- Lanai
- Guam



Illinois

FLO Trans

5575 S. Archer Ave.
Chicago, IL 60638
708-929-4431
www.flotrans.com



Principal Contacts:

CJ Johnson – Owner
cj@flotrans.com

Matt Berkshire – CEO
Daca@flotrans.com

Lance Robbins
Vice President of West Coast
lrobbins@flotrans.com

FLO Trans is an asset based full-service trucking and logistics company. Founded in Chicago in 2000, we have been trucking in and out of Chicago and all over the United States, Mexico, and Canada ever since.

We are a family company, and when you work with us whether it's as a customer, a vendor, a partner, or an employee, we'll treat you as a part of the FLO Family. While we operate as a family business, we do it efficiently, and thus we are able to offer our great and friendly service at competitive rates.

FLO Trans recognizes the need for environmentally ethical transportation, and since 2017 FLO Trans has partnered with the Department of Transportation's Smart Way program to reduce carbon emissions, and its carbon footprint on the world. FLO Trans uses paperless billing, and does not use single-use plastics within its office, while working to use other Smart Way carriers within its brokerage. FLO Trans exclusively uses "Eco Boost" tractors to reduce both its gas consumption and carbon-footprint.



Services Offered:

- Intermodal
- Specialize in overweight/permit containers
- Local Chicago Intermodal carrier for all Chicagoland rail yards
- Fleet of private chassis that include tri axles
- Newer trucks
- Pre-pulls and yard storage containers
- Transloading and cross-docking capabilities
- Full service brokerage - TL, LTL, Hot Shots, Trade Show
- Special Projects
- Warehousing
- Air Freight

Areas Served:

All of the Chicagoland area, United States, Mexico and Canada



Illinois

Moran Transportation Corporation

2401 Arthur Avenue
Elk Grove Village, IL 60007
Phone 847-439-0000
Fax 847-439-0047
www.morantransportation.com



Principal Contact:

Michael D. Moran

mdmoran@morandist.com



LTL SERVICE AREA NETWORK TERMINALS:

- Elk Grove Village, IL
- Rockford, IL
- Bloomington, IL
- Elkhart, IN
- Fort Wayne, IN
- Indianapolis, IN
- St. Louis, MO
- Minneapolis, MN



Equipment:

- 325 tractors & Straight trucks
- 415 trailers
- 175 liftgate equipped trucks & trailers

Terminals:

Chicago (IL), Rockford (IL), Elkhart (IN), Fort Wayne (IN), Indianapolis (IN), Bloomington (IL), St. Louis (MO), Minneapolis (MN)



Services Offered:

Moran Transportation Corporation

- Complete inbound and outbound
- LTL support programs
- LTL transportation: Local and Midwestern
- Liftgate and Inside delivery specialists
- Residential Delivery
- Dedicated cartage programs
- Logistics and Third Party Services
- Pool distribution
- Retail Pool Distribution



Massachusetts

Fowler's Express, Inc.

Distribution & Warehousing

Corporate Address:

200 Millenium Circle
Lakeville, MA 02347
800-633-6103
508-946-3402
www.fowlersinc.com



Principal Contacts:

Tim Foster

Vice President Operations

customerservice@fowlersinc.com

Fowler's Express was founded in 1942 by Vernon Fowler of Whitman, MA. The company was incorporated in 1973 and operated one truck serving the greater Boston Metropolitan area. Their vehicles are cell phone dispatched and GPS equipped to provide an immediate response to their customers' requests. The company moved to a new facility in 2010, to accommodate our growing warehouse & distribution operations.

Our commitment to customer satisfaction remains our top priority. Technology is continuously being advanced. Inquiries are handled quickly and accurately by a staff of dedicated customer service professionals committed to providing you with the best warehousing services possible. Our customer base is localized and it includes many well-known national and fortune 500 companies.



Services Offered:

- Warehousing Services
- Contract Carriage
- Consolidation & Distribution
- Cross Dock
- Transfer & Trans Loading
- Storage Trailer Rentals
- Container Unloading

Areas Served:

- Food Grade
- FDA Inspections
- Computer Controlled Inventory
- Air Ride Equipment
- Computerized Dispatch System
- Customizes Pricing Alternatives
- Dedicated Customer Service Professionals Committed to Total Satisfaction
- Dedicated Transport
- Document Imaging
- Expedited Delivery
- EDI Tracing & Tracking Capabilities
- GPS / Satellite Equipment Location
- JIT Delivery
- Plant & Warehouse Relocation
- Strategic Marketing & Operational Alliances Servicing Points Beyond
- Trained Hazardous Materials Specialists
- Ground Level Loading
- Pic-pak Fulliment
- Palletizing

Areas Served:

- Partner Service to the Continental United States
- Partner Service to the Provinces or Quebec & Ontario



Michigan

Automated Logistics Systems, LLC



Headquarters:

3000 Blake Rd
Jackson, MI 49201
800.551.9399 (all locations)
automatedlogistics.com
sales@automatedlogistics.com

Michigan Office

1595 Galbraith Ave SE
Suite 275
Grand Rapids, MI 49546

Texas Office

5902 Riverside Dr
Laredo, TX 78041

Principal Contacts:

Joe Parker

President
jparker@automatedlogistics.com

Matt Eckler

COO
meckler@automatedlogistics.com

Nick Schafer

VP of Sales & Operations
nschafer@automatedlogistics.com



Services Offered:

- Managed Services
- Freight Capacity
- Project Logistics
- Consolidation
- Warehousing
- Cross Border
- Expedite

Modes

- | | |
|-----------------------|--------------|
| ■ Truckload | ■ Ocean |
| ■ Less Than Truckload | ■ Intermodal |
| ■ Flatbed | ■ Reefer |
| ■ Air | |

Geography Covered

- | | | |
|------|----------|----------|
| ■ US | ■ Mexico | ■ Canada |
|------|----------|----------|

With roots back to the 1920s, ALS has become one of the top transportation brokerages and 3PLs in the industry. No matter how small or how big the project, ALS has the resources to ensure a quality transportation solution every time. While ALS is large enough to compete with industry giants, they are small enough to care for clients like family. With truck capacity anywhere in North America and warehousing facilities in Laredo, TX and Jackson, MI available for consolidation and storage, ALS lives up to its Covenant: "ALS succeeds because we're committed to building strong customer relationships right from the start. Our passion is demonstrated by a job well done. We provide exemplary service delivered by employees who genuinely care. Every move we make matters - how we work, how we think, how we communicate. We're sincerely "Beyond Driven."



DISTRIBUTORS & CONSOLIDATORS OF AMERICA

Michigan

Davis Cartage Co.

Headquarters:

230 Earl Slesseman Drive Phone 989-743-4445
Corunna, MI 48817 Toll Free 800-521-0001
www.daviscartage.com Fax 989-743-5756

Principal Contacts:

Glen Merkel - President & Chairman

800 521 0001 x232
gmerkel@daviscartage.com

Kevin Nevison - Vice President of Sales

800 521 0001 x231
knevison@daviscartage.com

Davis Cartage Co. is a family owned transportation and warehousing company. As a full-service transportation and logistics provider our scope of service can be as simple as moving a truckload across town, or moving a pallet across the globe. Our customers regularly reach out to our team of Logistics professionals as a one stop shop for their complex shipping needs.

Established in 1941, Davis Cartage Co. offers flexible warehousing solutions with facilities located throughout Central & Southwest Michigan. Our multi-client public distribution centers can be contracted on a short-term or long-term basis. We understand your fluctuating space requirements and we would welcome the opportunity to design a solution to meet your specific needs. Our Food Grade facilities combined with our asset based transportation division can provide you with quick and reliable access to your customers in the United States & Canada.

With a long history in working with the regions Food Processors and Automotive Suppliers, Davis Cartage Co. fully understands the many logistics challenges in the Great Lakes Region. We support a diverse group of manufacturers and distributors in the region by providing specialized equipment and multi-mode transportation solutions.



Services Offered:

Warehouse & Distribution

- Multiple Locations in Michigan
- Transload Services – Rail Access
- Dedicated Warehouse Transportation Fleet
- Michigan 8 Axle Heavy Haul Trailers for Warehouse Transfers
- Sequencing
- Pick & Pack
- Cross Dock & Consolidation
- Quality Inspections
- Reverse Logistics
- Vendor Managed Inventory (VMI)
- Fulfillment
- AIB Food Grade Certified Facilities
- Climate Controlled Facilities

Transportation Services Available

- | | |
|----------------------|---------------------|
| ■ Intra Michigan | ■ Intermodal |
| ■ Truckload Services | ■ 8 Axle Dry Van |
| ■ LTL Services | Heavy Haul Trailers |
| ■ Flatbed | (up to 100,000 lbs) |

Areas Served:

We run company equipment within Michigan, Indiana, Ohio, Illinois, Wisconsin, New York, and Southwest Ontario – Canada.

Warehouse Service Centers (750,000 square feet)

- | | | |
|---------------|------------|--------------|
| ■ Corunna MI, | ■ Mason MI | ■ Saginaw MI |
| ■ Owosso MI | ■ Niles MI | |



Minnesota

King Solutions, Inc.

11011 Holly Lane N.
Dayton, MN 55369
Phone 763-428-5464
800-728-8632
www.kingsolutionsglobal.com

Principal Contacts:

Deann Elfering

EVP of Operations
Direct: 763-428-5329
deann.elfering@kingsolutionsglobal.com

ALL UNDER OUR ROOF

Not only can we streamline the process at your facility, we can take on your whole operation at ours. Our warehouse locations in Minneapolis, MN feature a combined footprint of over 450,000 sq ft of space. And in keeping with our Thinking Green initiative, the space is fully equipped with energy-efficient motion-sensor lighting and video surveillance.



KINGSOLUTIONS

Services Offered:

- **Transportation Management**
- **Freight Consolidation**
- **USPS Destination Entry**

- LTL
- Truckload
- Intermodal
- Expediting
- Final Mile
- Date Specific Delivery
- Project Management
- Fulfillment
- Warehousing
- cGMP
- Pool Distribution
- Retail Distribution
- Business Intelligence
- Freight Audit
- GPS Tracking
- Technology Solutions
- Claims Management

Areas Served:

- Nationwide
- Global Logistics Services



DISTRIBUTORS & CONSOLIDATORS OF AMERICA

Located near St. Louis, MO and Atlanta, GA



Warehouse & Distribution

NOTS Logistics

17848 Mockingbird Road
Nashville, IL 62263
Phone: 800-642-5436
Fax: 618-478-5356
www.otslogistics.com



WAREHOUSING

- Public & Contract Warehousing space
- Customized Warehouse space
- Reverse Logistics
- Returns Processing



TRANSPORTATION

- Shuttle Services
- Specialized Equipment
- Short Haul Round Trip Truckloads



CUSTOMIZED DISTRIBUTION

- Dedicated Route Distribution
- Tailored Distribution Programs
- Pool Distributions / Milk Runs
- Driver & Equipment Leasing



WORKFORCE MANAGEMENT

- Temporary Staffing
- Warehouse and Driver Management Services
- In-house Customized Management Services

Principal Contact:

Kevin J. Brink

Vice President,
Business Development
kevinb@otslogistics.com





New Jersey

PAVXPRESS

**NEW
MEMBER
SPOTLIGHT**



NYC Terminal
499 River Road
Clifton NJ 07014
201-330-8300

PHL Terminal
195 Dominic Lane
Paulsboro NJ 08066

pavxpress.net

Principal Contacts:

Kenneth Pavlik
President
kenpavlik@pavxpress.net

Sean Pavlik
Vice President
seanpavlik@pavxpress.net

Christian Pavlik
Chief Financial Office
cpavlik@pavxpress.net

Founded in 1999, PavXpress Inc. began as a solo venture with a single vehicle. Through Kenneth Pavlik's vision and dedication, the company rapidly expanded, evolving into a fleet of over 34 power units and 2 terminals in New Jersey.

With two strategic terminals in New Jersey, PavXpress Inc. specializes in LTL and FTL in the bustling New York City and Philadelphia metro areas.

Our philosophy is simple yet profound: we see ourselves as an integral extension of our clients' businesses. We take the time to understand their unique needs and craft logistic solutions that set us apart from the competition. It's not just about moving goods; it's about upholding a legacy of trust, efficiency, and tailored service, ensuring that every delivery strengthens lasting relationships.

At PavXpress, we are your trusted local freight partner, dedicated to serving the dynamic hubs of New Jersey, New York, and Philadelphia. Our unwavering commitment to providing top-tier freight solutions ensures that your needs are met with professionalism and care.

Services

- Asset-based LTL and FTL carrier
- Next day LTL service between NJ, NYC Metro, PHL Metro, and DE
- Warehousing
- Distribution
- Consolidation
- Limited Access Service (Residential, school, government/state facilities, and other points not open to general public for commercial purposes)
- Liftgate delivery and pickup for LTL and FTL
- Container Freight Station pickup and delivery
- Expedited freight solutions

Service Area

- Lower New York and New York City 5 Boroughs
- New Jersey
- Southeast Pennsylvania
- Northern Delaware

Service Area



Entire state of New Jersey, Philadelphia Metro, and New York City Metro



New Jersey

**NEW
MEMBER
SPOTLIGHT**

PJT Logistics Service, Inc.

80 Newfield Ave
Edison, NJ 08837
732-243-9450
www.pjtlogistics.com



PJT Transport & Logistics is your premier source for quality transport service at the most competitive rates. They offer a professional, specialized service for transporting dry goods, electronics, garments, chemicals, and more.

Specializing in import/export containers to and from New York and New Jersey, L.T.L distribution, pier services, piggyback services to all rails, as well as swing loads from containers to road carriers for all points in the U.S., Canada and Mexico, and provides one thru bill.

PJT offer a superb fleet of state-of-the-art vehicles and a modern, 32 door truck terminal and warehouse with 24-hour security, as well as a reputation for safe, on-time deliveries.

PJT are a bonded FHSA carrier with a current custom house license, and our competitive rates and flexible services make them your most cost-effective choice when you need transportation services.



Services Offered:

- Nationwide Trucking
- 50 States including Canada & Mexico
- Intermodal Service
- Import/Export Drayage
- LTL and LCL Service
- Flatbeds, Step-decks, Double-Drop and Multi-Axle Service
- Rail siding Trans-loads. 4 Railcar Doors
- Alcohol Certified
- Expedited Freight Solutions
- Small Freight/Package Courier Service

Warehousing

- Long/Short Term Contracts
- Pick and Pack Professionals
- Transloading, Blocking & Bracing, and Consolidation
- 32 Door Truck Terminal Fully Fenced on 4 Acres
- 24 Hour Security, Electronic Gates with Video Surveillance
- FDA & HAACP Certified

Specialized Services

- New York City Pick Up and Delivery Specialists (Curbside, Inside, Lift-Gate, Residential)
- Hazardous/Bonded Freight Service Nationwide
- Over-Dimensional Cargo
- Company Owned Chassis
- Air Freight to all Major Markets
- Direct Service to and from Puerto Rico, Caribbean Islands, Hawaii, and Alaska
- Container Freight Station Pick Up Specialists and Delivery
- Container Import/Export from ANY U.S. Port

Areas Served:

50 States including Canada & Mexico

New York / New Jersey / Ontario, Canada

SPEED Global Services...

One of the most trusted names in the business for companies that need to ship freight via ground, air, ocean or rail.



Around the corner or around the world...
SPEED Delivers!



Principal Contacts:

Carl Savarino
CEO
csavarino@speedgs.com

David Galante
Vice President
dgalante@speedgs.com

Joey Casullo
Director of International
jcasullo@speedgs.com



2299 Kenmore Ave
Buffalo, NY 14217

Phone: 716-876-2235
ext 1700

www.speedgs.com

SERVICES OFFERED

International Freight Forwarding

- Daily consolidation to major routes and door-to-door rates
- Documentation preparation and filing
- Experienced, customer-focused, single point-of-contact staff
- Import or export air/ocean forwarding
- Letters of credit

Transportation Services

- Direct/next day service to more than 1,000 points in NY, PA and Ontario, Canada
- Cross-border (U.S./Canadian) shipping
- Same-day expedited service
- C-TPAT and FAST express certified with EDI capabilities
- Container drayage
- Local, regional and national LTL & T/L services

Warehousing & Fulfillment

- Over 1.7 million square feet of public and contract warehouse space in Buffalo
- 100,000 square feet warehousing in Linden, NJ
- Realtime online inventory
- Quality inspection
- Dry, clean, temperature-controlled environment
- Freezer and cold storage warehousing
- Foreign Trade Zone (FTZ) CFS/CES
- Inside rail unloading
- Heavy lift and overhead crane capabilities
- North/South - U.S./Canada consolidation
- Cross-dock/forwarding
- GMP Certified
- AG & Market Approved

AREAS SERVED

Worldwide



Ohio

Cleveland Express Trucking

Headquarters:

3091 Rockefeller Ave
Cleveland, OH 44115
(Main) 216-348-1007
(WATS) 800-969-1007
(Fax) 216-348-0999
cetruck.com

Principal Contact:

Tom Wagner
tom@cetruck.com

Cleveland Express was founded in 1977 to provide customers in Northeastern Ohio with quality truckload and LTL service. Our 54-door terminal is situated on 7-acres near downtown Cleveland with easy access to all major interstates.

Express is Our Middle Name



Services Offered:

- Asset-Based Truckload within 250 Miles from Cleveland
- HAZ-MAT Certified
- LTL Ohio, Pennsylvania, Michigan, Indiana & Kentucky
- Contract/Dedicated Cartage
- Distribution/Consolidation Services
- Drayage
- Short-Term Warehousing
- Storage Trailers
- Cross-Dock Services
- Fueling Services

Areas Served:

- 48 state TL and LTL





Pennsylvania

A. Duie Pyle, Inc.

650 Westtown Road, P.O. Box 564
West Chester, PA 19381
Phone 800-523-5020
www.aduiepyle.com

Principal Contact:

ANNA HUMMEL | Director of Operations/Drayage.
610-350-3039 (office), 610-909-7138 (cell)

INTEGRATED SUPPLY CHAIN SOLUTIONS PROVIDER

A. Duie Pyle is the Northeast's premier transportation and logistics provider, specializing in Less-Than-Truckload (LTL) service with extended coverage in the US and Canada through established partnerships. A family owned business since 1924, our company's core values empower us to deliver exemplary service.

With 34 LTL service centers and 17 warehouse facilities spanning over 4.2 million square feet, A. Duie Pyle offers a range of integrated transportation and distribution services. Whether it's LTL, Dedicated fleet operations, Brokerage Solutions for truckload needs, or Warehousing & Distribution services, our flexibility, depth of resources, and diverse capabilities enable customers to seamlessly integrate multiple supply chain solutions with a single point of accountability.



A Proud "Quest For Quality" Recipient Since 1989

SOLUTIONS DESIGN

- Complete Supply Chain Analysis
- Customized Plan Meeting Your Unique Needs
- Opportunity to Source Multiple Services

LTL

- Guaranteed Expedited - Pyle Priority Service
- Express Solutions
- Pool Distribution/Inbound Consolidation

DEDICATED

- Fleet Management & Supplementation
- Equipment Purchase, Lease Assumption
- Route Optimization for More Efficient Deliveries

BROKERAGE

- Nationwide, Regional & Canada
- Same Day, Next Day & By Appointment
- Specialized Equipment & Services

WAREHOUSE & DISTRIBUTION

- 17 Strategically Located Northeast Facilities
- Highway, Port, Rail & Intermodal
- Fulfillment Center Capabilities



Pennsylvania

Maple Logistics Solutions

Headquarters:

60 Grumbacher Road
York, PA 17406

Mailing Address:

PO Box 2695
York, PA 17405
(717) 764-4596
www.MapleLogisticsSolutions.com
info@maplesoln.com

Principal Contact:

Sales Inquiries
(717) 764-4596
info@maplesoln.com

Locations:

York, PA
Lebanon, PA
Mount Joy, PA



Services Offered:

- Warehousing
- Fulfillment
- Food Grade
- Pick and Pack
- Inventory Management
- Kitting and Assembly
- E-Commerce Services
- Export Consolidation
- Premium and custom packaging
- Online inventory, receipts, and tracking information 24/7
- Reverse Logistics
- Rework Services
- Full EDI Capability

Areas Served:

- North America, Worldwide





Texas

**NEW
MEMBER
SPOTLIGHT**



Pronto Delivery Courier Logistics, LLC

Transportation and Warehouse Services

Corporate Address:

7420 S. Cooper Street • Arlington, TX 76001
817.261.0035 • www.pronto-delivery.com

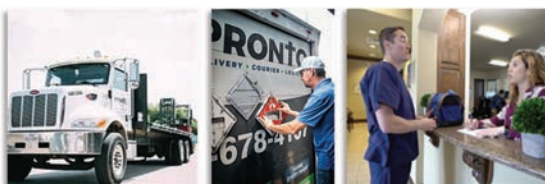
Principal Contact:

John Blesi	Chris Ballard
President	Director of Logistics
john.blesi@pronto-delivery.com	chris.ballard@pronto-delivery.com

Warehouse Operations:

Pronto Delivery	Pronto Delivery
Dallas/Ft. Worth, TX	Houston, TX
2007 Exchange Drive	535 W 38th St
Arlington, Texas 76011	Houston, TX 77018
817.261.0035	866.691.9107

Pronto is the premier transportation and warehousing company in the Dallas/Ft Worth and Houston marketplaces. Operating since 1984, we are experts in expedited, final mile, warehousing and brokerage services. Our fleet consists of 200 drivers with equipment spanning from cars/vans to tractor trailers with moffetts. We are a one stop solution for material movement. Technologically, we are supported by a powerful operating system and have the ability to integrate into virtually any system and streamline operations to a highly customizable level. Our goal is to delight and captivate our partners and their customer base.



Services Offered:

- On-Demand Courier & Heavy Freight
- Expansive Service Levels – Non-Stop to Next Day
- Autos to Tractor Trailers
- Expedited Capability
- Final-Mile – B2B, B2C
- TSA Certified
- Hazardous Materials
- Medical – HIPAA Compliant – Specimens to Medical Equipment
- Dedicated Route Distribution
- Dedicated Equipment
- Nationwide Brokerage/Logistics Services
- Pick-Pack Fulfillment
- Container Unloading
- Cross-Dock
- Palletizing/Re-work
- Storage and Managed Inventory
- Online Order Entry and Order Management
- Real-time shipment updates via email or text
- BOL, POD and Signature capture
- Customer-facing Mobile Applications
- EDI and API integration for Quoting, Order Creation, Shipment Updates, Invoicing
- Driver Mobile Applications
- Optimized Dispatch and Routing Technology
- Customer SLA tracking and Customer level-of-service report cards

Areas Served:

- Dallas/Ft. Worth and Houston Metro Area plus extended coverage across Texas and bordering states
- Nationwide Shipping

Warehouse Operations:

- 160,000 sq. ft. in Dallas/Ft. Worth
- 25,000 sq. ft. in Houston



DISTRIBUTORS & CONSOLIDATORS OF AMERICA

Washington

Peninsula Truck Lines, Inc.

Headquarters:

Peninsula Truck Lines Inc.
33455 6th Ave S, Suite 2A
Federal Way, WA 98003
Phone: (253) 929-2000
Fax: (253) 929-2041
www.peninsulatruck.com

**NEW
MEMBER
SPOTLIGHT**

Principal Contact:

Brenett Waltos | Vice President Sales & Marketing
P: (253) 929-2014
brenettw@peninsulatruck.com

Since 1951, Peninsula has exceeded expectations while providing reliable transportation services and delivering peace of mind. Peninsula Truck Lines is rooted in family and in the Northwest region. They are a third-generation family-owned business and maintain the same unwavering commitment to their customers, employees, and community that they have had since the beginning.

Peninsula has been awarded and recognized for its Overall Service, Net Promoter score, and Safety.



Services Offered:

- Services
- LTL – High service overnight
- Distribution/Consolidation
- Cross-Dock

Resources

- 16 Terminals in WA, OR, and ID
- 557 Employees
- 325 hazmat and TSA certified drivers
- 350 Power units
- 1050 trailers

Areas Served:

- LTL Service to WA, OR and ID





Ontario



Polaris Transportation Group



Head Office

7099 Tobram Road
Mississauga, ON, Canada L4T 1G7
1.800.409.2269
polaristransport.com

Principal Contacts

Dave Cox | CEO

Ext. 1226
dcox@polaristransport.com

Gary Nicholson | GM of Polaris Global Logistics

Ext. 1265
gnicholson@thinkpgl.com

Dave Bochna | VP Business Development

Ext. 1234
daveb@polaristransport.com

Services Offered

- Canadian asset-based cross border LTL carrier (USA/CAN)
- Priority Plus™ overnight & next-day service between Toronto & select USA cities
- Delivering to & from all postal codes and zip codes
- CAN & USA customs-bonded carrier
- LTL, TL & global 3PL
- Warehousing & distribution
- Movement of tradeshow displays & exhibits
- Real-time tracking, automated updates & instant notifications via FR8Focus
- Cutting-edge technological innovations by NorthStar Digital Solutions
- 24/7 customer support, online ordering & shipping tools

Company Profile

Since 1994, Polaris Transportation Group has been an award-winning carrier of choice for Fortune 500 companies, 3PLs, global freight forwarders and small to large businesses alike. The Polaris Transportation Group comprises four operating divisions:

Polaris Transportation is one of Canada's largest privately held asset-based cross border LTL carriers with daily departures between Canada & the USA. They specialize in shipping dry goods and offer industry-leading transit times to and from all points in the USA.

Polaris Global Logistics (PGL) boasts a seasoned team of logistics professionals and a hand-picked partner carrier network delivering tailored supply chain solutions across North America and worldwide.

Polaris Commercial Warehousing operates highly secure facilities in Toronto, ON where they manage incoming shipments, order fulfillment, short & long-term storage and distribution throughout Canada & the USA.

NorthStar Digital Solutions (NDS) is infusing the digital experience into transportation and supply chain industries through powerful, efficient and seamless technology platforms. They recently launched FR8Focus, which is designed to solve real-world challenges in the LTL & TL market. For more information, visit northstardigital.solutions





DISTRIBUTORS & CONSOLIDATORS OF AMERICA

Ontario

CANADA

**NEW
MEMBER
SPOTLIGHT**

Speedy Transport



Corporate Address:

265 Rutherford Rd. South
Brampton, Ontario L6W 1V9
Phone: 416-510-2035
Toll Free: 800-265-5351
www.speedy.ca

Principal Contact:

Jared Martin - CEO
jared.martin@speedy.ca

Michael Sbrocchi
VP Sales & Customer Care
Michael.Sbrocchi@speedy.ca



Services Offered:

- LTL
- Retail appointment deliveries
- Expedite service
- Time definite and guaranteed service
- Distribution programs
- Vendor consolidation programs
- Canada-wide coverage
- North American logistics

Areas Served:

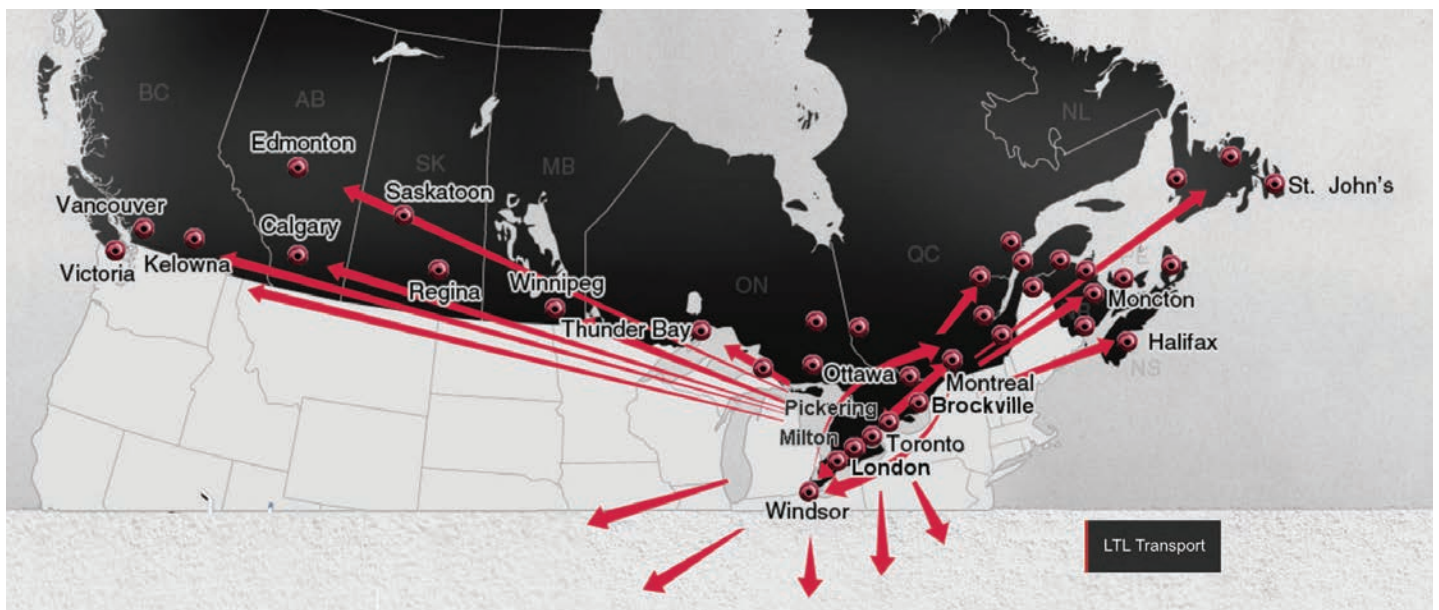
- Canada and USA

We started small and grew fast

Founded in 1941 as a local, same-day parcel pick-up and delivery service, Speedy Transport has grown to become one of central Canada's premier carriers. In the early years, motorcycles with sidecars delivered small parcels in downtown Toronto. Now, sophisticated transport services operate from terminals along the Windsor-Quebec City 401 corridor.

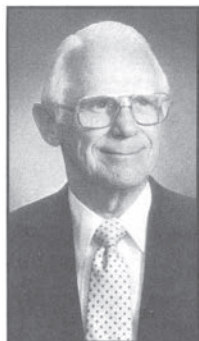
Our facilities were built with LTL distribution in mind

Our head office is conveniently located in Toronto, Ontario with a 100,000 square foot cross-dock facility acting as the central distribution hub. With a fleet of over 250+ owner-operators, we provide fast and effective distribution throughout Ontario, Quebec and the balance of Canada. Our commitment to delivering customer satisfaction is driven by our company's most valuable asset—our people.





Over 50 Years of DACA



Ira P. Jones

DACA was formed on November 17, 1971. A dozen transportation executives from around the country, interested in distribution and consolidation, sat down in a Dallas hotel and formulated the guidelines for an organization that eventually came to be known as Distributors and Consolidators of America.

Ira P. Jones, a long-time Texas trucking executive of Southwest Freight Distributors in

Dallas, TX, was the guiding force in DACA's infancy. He envisioned a bright future for the consolidation and distribution of a variety of goods, primarily for the retail trade.



The DACA organization is here to serve you, the customer, with the utmost integrity, honesty and quality. Choose DACA for all your transportation, logistics and warehousing needs!

DACA Executive Officers 2025

Title	Name	Company
President	Kevin Nevison	Davis Cartage
Vice-President	Anna Hummel	A. Duie Pyle
Secretary	David Fowler	Fowlers Express
Treasurer	Chris Benyovsky	Maple Logistics
Chairman	Lori Hooper	Frontline Freight
Past President	Steven Hartmann	Moran Transportation
Past President	David Galante	Speed Global
Past President	Kevin Brink	NOTS Logistics
Past President	Raymond Rodriguez	Honolulu Freight

Board of Directors 2025

Term	Name	Company
2022 - 2025	CJ Johnson	Flo Transport
2022 - 2025	Chris Benyovszky	Maple Logistics
2025 - 2028	Anna Hummel	A. Duie Pyle
2021 - 2025	Kevin Nevison	Davis Cartage



DACA Past Presidents

1972 – John Wagner, Jr.

Wagner Industries
Kansas City, MO

1973 – Ira P. Jones

Southwest Freight Distributors
Dallas, TX

1974-75 – A.J. “Tony” Naples

Tarcon, Inc.
Charlotte, NC

1974-77 – John J. Matthews

OK Delivery System
Portland, OR

1978-79 – Mike Connor

Detroit Transfer Co.
Detroit, MI

1980-81 – Willard Carlisle

Florida LTL Distribution
Orlando, FL

1982-83 – Joe M. Lock

Leonard Brothers
Transportation Co.
Kansas City, MO

1984 – Brad Rowland

Dry Storage Corp.
Chicago, IL

1985-86 – Pat McCanta

Western Cartage
Seattle, WA

1987-88 – Wayne Spain

Averitt Express
Nashville, TN

1989-90 – Bill Nelson

Hess Trucking Company
Hershey, PA

1991-92 – Rich Eberhart

Southwest Freight Distributors
Dallas, TX

1993-96 – Jim Latta, III

A. Duie Pyle, Inc.
West Chester, PA

1997-98 – Bob Kortenhaus, Sr.

Billkays Express
Elizabeth, NJ

1998-99 – Carl Savarino

Speed Global Services
Buffalo, NY

2000-2001 – Mark Reimer

Freightmasters, Inc.
Eagan, MN

2002-2003 – Kevin J. Brink

NOTS Warehouse & Distribution
Services
St. Louis, MO

2004-2005 – Mark Anness

Kid Glove Service, Inc.
Indianapolis, IN

2006-2007 – Michael Wichert

Cal State Xpress
South Gate, CA

2008-2009 – Rich Brown

Minneapolis, MN

2010-2011 – David Galante

Speed Global Services
Rochester, NY

2012-2013 – Michael Oliver

Lynden Transport, Inc.
Seattle, WA

2014-2015 – Andy Delaney

Capitol Express & Warehousing
Jessup, MD

2016-2017 – Mike Moran

Moran Transportation Corp.
Chicago, IL

2018-2019 – Raymond Rodriguez

Honolulu Freight Service
Montebello, CA

2020 – 2021 - Steve Hartman

Lynden Transport, Inc.
Seattle, WA

2022-2023 - Lori Hooper

Frontline Freight, Inc..
Santa Fe Springs, CA

2024-2025 - Kevin Nevison

Dacvis Cartage
Corunna, MI

DACA Membership

2013
Cleveland Express Trucking

2023
Flo Trans
Pronto Delivery Courier Logistics
Peninsula Truck Lines
PJT
Speedy Transport

2017
Davis Cartage

2016
Cleveland Delivery

2014
Automated Logistics Services

2013
Frontline Freight

2012
Polaris Transport Carriers

2011
Maple Logistics Solutions

2007
King Solutions

2006
Honolulu Freight Service

2003
Lynden Transport

1999
Moran Transportation

1998
Fowler's Express

1997
NOTS Logistics

1996
Speed Transportation

1991
A Duie Pyle, Inc.

CAN EVERYONE ON YOUR TEAM
SOLVE THIS?

$$ICC = \frac{C + T + I + W + X + (S - R1) + (O - R2)}{\text{Annual \$ Material Cost}}$$

If not, they should be reading this.

Spread the good news by getting your vendors,
partners, and team members reading *Inbound Logistics*.

Point them to inboundlogistics.com/subscribe

**inbound
logistics**
a II THOMAS company



ICC=inventory carrying costs C=capital T=taxes I=insurance W=warehouse costs X=shrinkage S=scrap O=obsolescence costs R=recovery



DISTRIBUTORS & CONSOLIDATORS OF AMERICA



A North American Network of asset based companies providing consolidation, distribution, warehousing, transportation and 3PL solutions.

Distributors and Consolidators of America is composed of privately owned, fiscally sound corporations located throughout North America. We offer an infinite variety of transportation and warehousing services. DACA is a ready resource for valuable distribution alternatives.

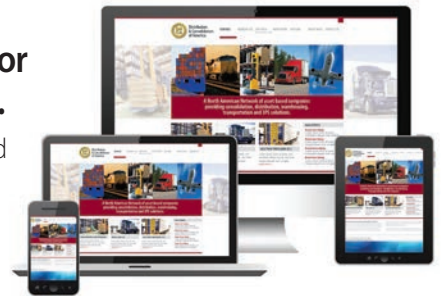
What DACA can do for you!

Provide flexible, personalized and immediate response to your most challenging distribution problems. DACA has many years of experience and can effectively design services to meet any requirement.

- | | |
|------------------------------|----------------------------------|
| ■ Assembly & Distribution | ■ In-House Custom Services |
| ■ Bar Code Scanning | ■ LTL & TL Services |
| ■ Bonded Cartman & Carrier | ■ Order Picking |
| ■ Dedicated Fleet Services | ■ Pick & Pack and Ticketing |
| ■ Bonded Warehousing | ■ Piggyback Drayage |
| ■ Container Storage | ■ Protective Services |
| ■ Contract Carrier Authority | ■ Specialized Equipment |
| ■ Driver & Equipment Leasing | ■ Specialized Material Handling |
| ■ Driver Management Services | ■ Tailored Distribution Programs |
| ■ Home Deliveries | ■ Warehousing |

Driving with more power for our members.

Our newly upgraded website offers more power to our members with user friendly navigation so potential customers can find your company and services with ease. Customers are able to search by company name, services or areas served. Now SEO friendly on all mobile devices so you get more power for search engines to find your company and help you grow.



Let DACA help you get more driving power now.

For more information visit us on the web at

www.dacacarriers.com

or contact us at

717-764-6531

Distributors & Consolidators of America

P.O. Box 2695
York PA 17405



DISTRIBUTORS & CONSOLIDATORS OF AMERICA

A North American Network of asset based companies providing consolidation, distribution, warehousing, transportation and 3PL solutions.



Distributors & Consolidators of America

717-764-6531

www.dacarriers.com

North American Transportation and Distribution Network